

## BREEZELESS+ ROUNDFLOW CASSETTE



Midea Breezeless+ Roundflow cassettes have a super slim design with low heights starting from just 205mm.

The range features 360° airflow, which is softened into thousands of tiny particles of cool air by 10,800 hourglass-shaped micro holes to eliminate the feeling of cold draughts. Optimum comfort can be achieved, tailored to each unique user's preference via various modes; Air Blast, Gentle Flow and Power Breezeless.

### BREEZELESS+ EFFECT

10,800 hourglass-shaped micro holes turn the airflow into thousands of tiny particles of cool air, softening the airflow to eliminate the feeling of cold draughts.

### 360° AIRFLOW OUTLET

360° air outlet provides even airflow circulation to cool or heat every corner of a room and keep a constant temperature.

### 'FOLLOW ME' SENSITIVE COOLING

Keep the remote close to you and it will measure the temperature around you and adjust comfort levels accordingly.

### FRESH AIR INLET & DRAIN PUMP

Built-in fresh air inlet creates a more comfortable environment. Optional motor available to increase the "fresh air effect". The built-in drain pump is mounted externally for easy maintenance, it is vertically exhausted and pumps up to 1000mm.

### LED FASCIA DISPLAY

Built-in display for easy trouble shooting and system information.

### INDEPENDENT VANE CONTROL

The direction of each vane can be set independently via the wired controller.

### SUPER SLIM DESIGN

The height of the units starts from just 205mm.

### TWIN COMBINATIONS

Outdoor unit sizes 36,42,48 & 55 can be installed with two indoor units for increased flexibility.

### REMOTE SIGNAL

Built-in ports for on/off control and fault indication.

## NEW FOR 2021



Indoor unit



Outdoor unit



IR Controller RG10-B (optional)



Wired Controller KJR-120G2-S2 (included) KJR-120G2-M2 (optional)



Optional WiFi Control



360° Air Flow Panel



Remote Enable Port



Error Alarm Port



Twin Combination



Refrigerant Leakage Detect



Louvre Position Memory



Fresh Air Inlet



Temperature Compensation



Anti-cold Air Function



Low Ambient Cooling



Emergency Use Function



Built-in Drain Pump



Wired Control



Central Control Management

#### Please note:

- For full Breezeless+ function set dip switch SW2-No.2 to on. Once active it can be enabled via (optional) infra-red controller.
- If humidity levels in a room rise above standard conditions the system will automatically switch to normal operation. This is to deal with the load before reverting back to Breezeless mode.



Voice Control



Midea Air App

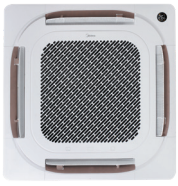
## BREEZELESS+ ROUNDFLOW CASSETTE

### BREEZELESS+, A6 DUCT, CEILING & FLOOR KRJ-120G2(S2) - 2-Core Controller

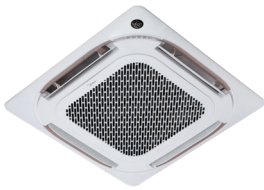


INDOOR			MCD1-24HRFNX(18)	MCD1-24HRFNX	MCD1-36HRFN8	MCD1-42HRFNX
OUTDOOR			MOX330U-18HFN8	MOX430U-24HFN8	MOD30U-36HFN8	MOD30U-42HFN8
Nominal Cooling Capacity (min-max)	kW		5.28(2.90-5.59)	7.03 (3.22-8.21)	10.55 (4.04-12.02)	12.31 (2.58-13.7)
Nominal Heating Capacity (min-max)	kW		5.57(2.37-6.10)	7.62 (2.81-8.94)	11.14 (2.78-12.30)	13.48 (3.37-14.07)
UK Total Cooling Capacity	kW		5.3	7.78	11.39	12.13
Seasonal Efficiency SEER/Class	W/W		6.3/A++	6.2A++	6.7/A++	6.1/A++
Seasonal Efficiency SCOP/Class	W/W		4/A+	4/A+	4/A+	4/A+
Power supply (indoor power via outdoor)	V- Ph-Hz		220-240-1-50	220-240-1-50	220-240-1-50	220-240-1-50
Cooling Current (min-max)	A		7.2(3.2-9.2)	10.2 (4.2-12)	17.5 (4.2-18.5)	18.8 (3.1-19.1)
Heating Current (min-max)	A		6.8(3.1-8.5)	7.62 (2.81-8.94)	11.14 (2.78-12.30)	13.48 (3.37-14.07)
Max.Current	A		13.5	19	22.5	22.5
Recommended Fuse Size (Outdoor)	A		16	20	32	32
Interconnecting/Indoor Power Wiring	No.		4 Core 1mm <sup>2</sup>	4 Core 1mm <sup>2</sup>	4 Core 1mm <sup>2</sup>	4 Core 1mm <sup>2</sup>
Indoor Air Flow (High to Low)	m <sup>3</sup> /h		1300/1140/1000	1300/1140/1000	1700/1550/1380	1900/1750/1600
Indoor Sound Pressure Level (High to Low)	dB(A)		45.5/42.5/39.5/27	45.5/42.5/39.5/27	50/47.5/44.5/39	51/48.5/46/38
Indoor unit	Dimensions (WxDxH) (body)	mm	830x830x205	830x830x205	830x830x245	830x830x287
	Packing (WxDxH) (body)	mm	910x910x250	910x910x250	910x910x290	910x910x330
	Dimensions (WxDxH) (panel)	mm	950x950x55	950x950x55	950x950x55	950x950x55
	Packing (WxDxH) (panel)	mm	1035x1035x90	1035x1035x90	1035x1035x90	1035x1035x90
	Net/Gross Weight (body)	Kg	21.6/25.4	21.6/25.4	27.2/31.2	29.3/33.5
	Net/Gross Weight (panel)	Kg	6/9	6/9	6/9	6/9
Drainage water pipe dia.	mm		ODΦ025	ODΦ25	ODΦ25	ODΦ25
Outdoor air flow	m <sup>3</sup> /h		2100	3500	4000	4000
Outdoor Sound Pressure Level	dB(A)		53	57	60	60
Outdoor unit	Dimensions (WxDxH)	mm	805x330x554	890x342x673	946x410x810	946x410x810
	Packing (WxDxH)	mm	915x370x615	995x398x740	1090x500x885	1090x500x885
	Net/Gross Weight	Kg	32.5/35.2	43.9/46.9	66.9/71.5	71.0/75.0
Refrigerant	Type		R32	R32	R32	R32
	GWP		675	675	675	675
	Charged quantity	Kg	1.15	1.5	2.4	2.8
	Additional Charge	g/m	12	24	24	24
Refrigerant piping	Liquid side/ Gas side	mm(inch)	Φ6.35/Φ12.7(1/4"/1/2")	Φ9.52/Φ15.9(3/8"/5/8")	Φ9.52Φ15.9(3/8"/5/8")	Φ9.52/Φ15.9(3/8"/5/8")
	Max. pipe length	m	30	50	75	75
	Max. height difference	m	20	25	30	30
Operating temperature	Indoor (Cooling/ Heating)	°C	16-32/0-30	16-32/0-30	16-32/0-30	16-32/0-30
	Outdoor (Cooling/ Heating)	°C	-15-50/-15-25	-15-50/-15-24	-15-50/-15-24	-15-50/-15-24

## BREEZELESS+ ROUNDFLOW CASSETTE



Indoor unit



Outdoor unit



IR Controller RG10-B  
(optional)



Wired Controller  
KJR-120G2-S2 (included)  
KJR-120G2-M2 (optional)

INDOOR			MCD1-36HRFN8	MCD1-48HRFNX	MCD1-55HRFNX
OUTDOOR			MOD30U-36HFN8	MOE30U-48HFN8	MOE30U-55HFN8
Nominal Cooling Capacity (min-max)	kW		10.55 (4.04-12.02)	14.07 (4.75-16.12)	15.53 (5.28-18.46)
Nominal Heating Capacity (min-max)	kW		11.14 (2.78-12.30)	16.12 (4.10-17.29)	18.17 (4.40-19.93)
UK Total Cooling Capacity	kW		11.39	15.28	17.22
Seasonal Efficiency SEER/Class	W/W		6.3/A++	6.1/A++	6.3/A++
Seasonal Efficiency SCOP/Class	W/W		3.9/A	4/A+	4/A+
Power supply (indoor power via outdoor)	V- Ph-Hz		380-415-3-50	380-415-3-50	380-415-3-50
Cooling Current (min-max)	A		6.5 (1.4-6.5)	8.1 (1.8-10.2)	8.6 (2.1-10.7)
Heating Current (min-max)	A		5.0 (1.3-6.4)	8.0 (1.9-9.5)	9.6 (2.1-10.7)
Max.Current	A		10	13	14
Recommended Fuse Size (Outdoor)	A		16	16	16
Interconnecting/Indoor Power Wiring	No.		4 Core 1mm <sup>2</sup>	4 Core 1mm <sup>2</sup>	4 Core 1mm <sup>2</sup>
Indoor Air Flow (High to Low)	m <sup>3</sup> /h		1800/1600/1400	1970/1780/1580	2000/1850/1650
Indoor Sound Pressure Level (High to Low)	dB(A)		50/47.5/44.5/39	51/48.5/46.5/37.5	53/50.5/48/40
Indoor unit	Dimensions (WxDxH) (body)	mm	830x830x245	830x830x287	830x830x287
	Packing (WxDxH) (body)	mm	910x910x290	910x910x330	910x910x330
	Dimensions (WxDxH) (panel)	mm	950x950x55	950x950x55	950x950x55
	Packing (WxDxH) (panel)	mm	1035x1035x90	1035x1035x90	1035x1035x90
	Net/Gross Weight (body)	Kg	27.2/31.2	29.3/33.5	29.3/33.5
	Net/Gross Weight (panel)	Kg	6/9	6/9	6/9
Drainage water pipe dia.	mm		ODØ25	ODØ25	ODØ25
Outdoor air flow	m <sup>3</sup> /h		4000	7500	7500
Outdoor sound pressure level	dB(A)		60	61	61
Outdoor unit	Dimensions (WxDxH)	mm	946x410x810	952x415x1333	952x415x1333
	Packing (WxDxH)	mm	1090x500x885	1095x495x1480	1095x495x1480
	Net/Gross Weight	Kg	80.5/85	103.7/118.3	107.0/121.2
Refrigerant	Type		R32	R32	R32
	GWP		675	675	675
	Charged quantity	Kg	2.4	2.9	3.0
	Additional Charge	g/m	24	24	24
Refrigerant piping	Liquid side/ Gas side	mm(inch)	Ø9.52/Ø15.9(3/8"/5/8")	Ø9.52/Ø15.9(3/8"/5/8")	Ø9.52/Ø15.9(3/8"/5/8")
	Max. pipe length	m	75	75	75
	Max. height difference	m	30	30	30
Operating temperature	Indoor (Cooling/ Heating)	°C	16-32/0-30	16-32/0-30	16-32/0-30
	Outdoor (Cooling/ Heating)	°C	-15-50/-15-24	-15-50/-15-24	-15-50/-15-24

Nominal Conditions: Cooling; indoor 27°C DB, 19°C WB, outdoor 35°C DB, 24°C WB.  
Nominal Conditions: Heating; indoor 20°C DB, outdoor 7°C DB, 6°C WB.

UK Conditions: Summer: indoor 21°C DB, 15°C WB, outdoor 27°C DB.  
Sound Pressure is measured 1.5m below the air-outlet at Nominal Conditions