

# Specifications

## Console R32

- SPI ioniser (included).
- Slim design: only 199 mm in depth.
- Two separate air outlets are possible, upper (cooling or heating) and bottom (cooling and heating)

- Long-life washable permanent filter.
- Auto Restart function.



Indoor Unit			AC026RNJDKG/EU	AC035RNJDKG/EU	AC052RNJDKG/EU
Outdoor Unit - Mono-Phase			AC026RXADKG/EU	AC035RXADKG/EU	AC052RXADKG/EU
Outdoor Unit - Tri-Phase					
<b>Capacity</b>					
	Cooling (Min/Nominal/Max)	kW	1.0/2.6/3.4	1.0/2.6/3.4	1.9/5.0/5.5
	Heating @ +7 °C (Min/Nominal/Max)	kW	1.0/3.5/4.2	1.1/4.0/4.6	1.5/5.6/6.5
	Heating @ -5 °C	kW	3.4	3.9	5.5
	Heating @ -15 °C	kW	3.00	3.50	4.90
<b>Performance</b>					
Energy Efficiency Cooling	SEER <sup>1</sup>	W/W	6.4/ <span style="color: green;">A++</span>	6.1/ <span style="color: green;">A++</span>	5.9/ <span style="color: green;">A+</span>
	Power Consumption	kWh/a	142	201	297
	Pdesignc	kW	2.6	3.5	5.0
	EER	W/W	3.61	3.12	2.79
Energy Efficiency Heating	SCOP <sup>1</sup>	W/W	4.2/ <span style="color: green;">A+</span>	4.1/ <span style="color: green;">A+</span>	4.0/ <span style="color: green;">A+</span>
	Power Consumption	kWh/a	667	683	840
	Pdesignh (average)	kW	2.0	2.0	2.4
	COP <sup>1</sup>	W/W	3.30	3.07	3.01
Airflow Rate	Indoor Unit (H/M/L)	m <sup>3</sup> /min	7.5/6.8/6.0	8.5/7.2/6.2	9.4/8.4/7.4
Sound Power	Indoor Unit	dB(A)	53	55	60
	Outdoor Unit	dB(A)	59	61	62
Sound Pressure	Indoor Unit (H/M/L/Silent)	dB(A)	36/31/26/23	38/34/30/24	43/39/35/32
	Outdoor Unit (H/L)	dB(A)	47/46	48/48	48/48
Fan/Outdoor Unit	Type		Turbo	Turbo	Turbo
	Power	W	37	35	35
	Number of Fans	-	1	1	1
Operating Temperature Range	Cooling	°C	-15-46	-15-46	-15-50
	Heating	°C	-20.0-24.0	-20.0-24.0	-20.0-24.0
<b>Electrical Data</b>					
Power Source	Indoor Unit	Φ, #, V, Hz	1Φ, 2, 220-240 V, 50 Hz	1Φ, 2, 220-240 V, 50 Hz	1Φ, 2, 220-240 V, 50 Hz
	Outdoor Unit Mono-Phase	Φ, #, V, Hz	1Φ, 2, 220-240 V, 50 Hz	1Φ, 2, 220-240 V, 50 Hz	1Φ, 2, 220-240 V, 50 Hz
	Outdoor Unit Tri-Phase	Φ, #, V, Hz	-	-	-
Compressor Type	Outdoor Unit	Type	Single BLDC	Single BLDC	Twin BLDC
Power (Min/Nominal/Max)	Cooling	kW	0.23/0.72/1.20	0.25/1.12/1.50	0.25/1.79/2.20
	Heating	kW	0.21/1.06/1.45	0.21/1.30/1.80	0.25/1.86/2.50
Current Input	Cooling (Min/Std/Max)	A	1.6/3.6/5.5	1.6/5.5/7.5	2.6/8.0/10.0
	Heating (Min/Std/Max)	A	1.3/5.0/7.0	1.3/5.9/10.5	2.3/8.3/14.0
<b>Dimensions</b>					
Net Dimensions (W x H x D)	Indoor Unit	mm	720 x 199 x 620	720 x 199 x 620	720 x 199 x 620
	Outdoor Unit	mm	790 x 548 x 285	790 x 548 x 285	880 x 638 x 310
Net Weight	Indoor Unit	kg	16.0	16.0	16.0
	Outdoor Unit	kg	32.5	35.5	46.5
<b>Refrigerant</b>					
Refrigerant	Type		R32 (contains fluorinated greenhouse gases. GWP = 675)		
	Factory Charging	kg	0.9/20 m	0.9/20 m	1.2/10 m
	Charging Ton equivalent CO <sub>2</sub>	tCO <sub>2</sub> e	0.61	0.61	0.81
	Additional Refrigerant Charging	g/m	-	-	15
Piping Connections	Liquid Pipe	ø, inch	1/4	1/4	1/4
	Gas Pipe	ø, inch	3/8	3/8	1/2
Piping Length	Min/Max	m	3/20	3/20	3/30
Piping Height	Max	m	15	15	20
Piping Connections	Drain Pipe	ø, mm	ID 18	ID 18	ID 18

### Accessories



#### Wireless Remote Controller

AR-EH03E



#### Touch Controller

MWR-SH11N



#### Advanced Wired Controller

MWR-WG00JN/MWR-WG00KN



#### Wi-Fi Kit

MIM-H04EN



#### External Thermostat

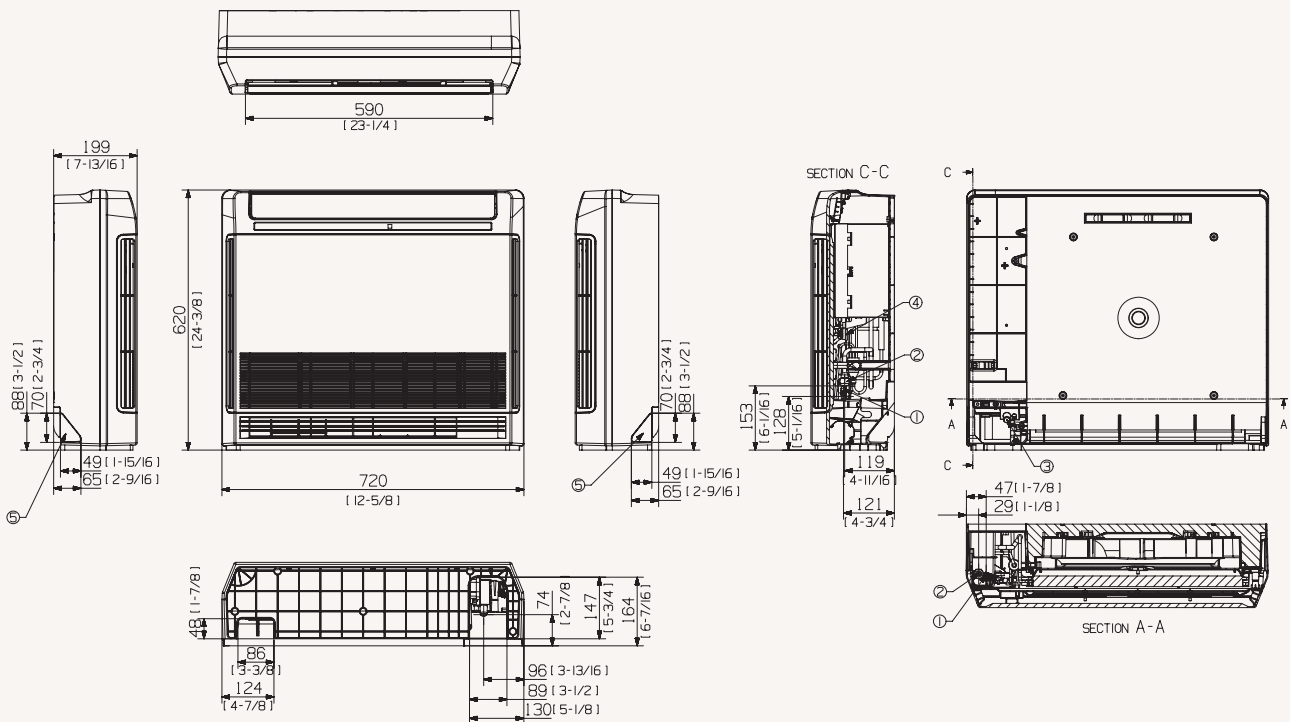
MRW-TA

<sup>1</sup> Energy labels as shown are according to EU No 626/2011 (LOT10) label classification 2019, on a scale from D to A+++.

# Dimensional drawings

Console R32

AC026/035/052\*NJDK\*/EU



NO	Name	Description
		AC026/35RNJDKG/EU
		AC052RNJDKG/EU
1	Liquid piping	ø6.35 (1/4)
2	Gas piping	ø9.52 (3/8)      ø12.70 (1/2)
3	Condensation drain piping	ID 18 [11/16] Hose
4	Power supply/communication wiring conduits	
5	Condensation drain piping	