

Specifications

MSP Duct HEE R32

- Smart pressure control with a range from 0 to 150Pa.
- Long-life washable permanent filter is included.
- Auto Restart function.
- Optional: Built-in condensation drain pump (750 mmH₂O).

- Operation range from -25°C until 52°C
- 100% heating capacity at -15°C
- Base heater as standard
- Inverter PBA self-diagnosis



| Indoor Unit | | | AC035BNMPKG/EU | AC052BNMPKG/EU | AC071BNMPKG/EU | AC100BNMPKG/EU | AC120BNMPKG/EU | AC140BNMPKG/EU |
|-----------------------------|-----------------------------------|---------------------|---|---|---|--|--|--|
| Outdoor Unit - Mono-Phase | | | AC035BXAPKG/EU | AC052BXAPKG/EU | AC071BXAPKG/EU | AC100BXAPKG/EU | AC120BXAPKG/EU | AC140BXAPKG/EU |
| Outdoor Unit - Tri-Phase | | | - | - | AC071BXAPNG/EU | AC100BXAPNG/EU | AC120BXAPNG/EU | AC140BXAPNG/EU |
| Capacity | | | | | | | | |
| Capacity | Cooling (Min/Nominal/Max) | kW | 0.80/3.50/5.30 | 1.20/5.00/7.50 | 2.20/6.80/9.50 | 4.00/10.00/12.80 | 4.10/12.10/14.00 | 4.10/13.40/16.00 |
| | Heating @ +7 °C (Min/Nominal/Max) | kW | 0.78/4.00/5.70 | 1.10/6.00/9.50 | 1.90/8.00/10.50 | 3.10/11.20/17.30 | 3.10/13.20/22.00 | 3.10/15.50/24.00 |
| | Heating @ -5 °C | kW | | | | | | |
| | Heating @ -15 °C | kW | | | | | | |
| Performance | | | | | | | | |
| Energy Efficiency Cooling | SEER ¹ | W/W | 7.0/ A++ | 7.0/ A++ | 7.3/ A++ | 7.6/ A+ | 7.4/ A+ | 7.1/ A+ |
| | Power Consumption | kWh/a | 175 | 206 | 326 | - | - | - |
| | Pdesignc | kW | 3.5 | 5.0 | 6.8 | 10.0 | 12.1 | 13.4 |
| | EER | W/W | 3.72 | 3.73 | 4.02 | 4.07 | 3.72 | 3.48 |
| Energy Efficiency Heating | SCOP ¹ | W/W | 4.3/ A+ | 4.6/ A++ | 4.3/ A+ | 4.4/ A+ | 4.0/ A+ | 4.0/ A+ |
| | Power Consumption | kWh/a | 749 | 1171 | 11530 | - | - | - |
| | Pdesignh (average) | kW | 2.3 | 4.1 | 4.7 | 7.8 | 9.5 | 9.5 |
| | COP ¹ | W/W | 3.64 | 3.85 | 3.79 | 4.07 | 4.0 | 3.63 |
| Airflow Rate | Indoor Unit (H/M/L) | m ³ /min | 10.4/9.2/8.0 | 15.5/12.0/9.5 | 20.0/16.0/12.0 | 30.6/26.2/21.8 | 33.2/27.2/21.2 | 33.2/27.2/21.2 |
| Sound Power | Indoor Unit | dB(A) | 52 | 49 | 56 | 58 | 62 | 62 |
| | Outdoor Unit | dB(A) | 61 | 63 | 64 | 66 | 70 | 69 |
| Sound Pressure | Indoor Unit (H/M/L) | dB(A) | 28/25/22 | 29/26/23 | 30/27/24 | 34/32/30 | 37/34/30 | 37/34/30 |
| | Outdoor Unit (H/L) | dB(A) | 46/46 | 48/46 | 49/47 | 50/47 | 56/54 | 54/53 |
| Fan/Outdoor Unit | Type | | BLDC | BLDC | BLDC | BLDC | BLDC | BLDC |
| | Power | W | 125 | 125 | 125 | 125 | 125 | 125 |
| | Number of Fans | - | 1 | 1 | 1 | 2 | 2 | 2 |
| External Static Pressure | Min/Std/Max | Pa | 0.00/25.00/147.00 | 0.00/30.00/147.00 | 0.00/30.00/147.00 | 0.00/39.20/147.00 | 0.00/51.00/147.00 | 0.00/51.00/147.00 |
| Operating Temperature Range | Cooling | °C | -20-52 | -20-52 | -20-52 | -20-52 | -20-52 | -20-52 |
| | Heating | °C | -25.0-24.0 | -25.0-24.0 | -25.0-24.0 | -25.0-24.0 | -25.0-24.0 | -25.0-24.0 |
| Electrical Data | | | | | | | | |
| Power Source | Indoor Unit | Φ, #, V, Hz | 1Φ, 2, 220-240V, 50Hz | 1Φ, 2, 220-240V, 50Hz | 1Φ, 2, 220-240V, 50Hz | 1Φ, 2, 220-240V, 50Hz | 1Φ, 2, 220-240V, 50Hz | 1Φ, 2, 220-240V, 50Hz |
| | Outdoor Unit Mono-Phase | Φ, #, V, Hz | 1Φ, 2, 220-240V, 50Hz | 1Φ, 2, 220-240V, 50Hz | 1Φ, 2, 220-240V, 50Hz | 1Φ, 2, 220-240V, 50Hz | - | - |
| | Outdoor Unit Tri-Phase | Φ, #, V, Hz | - | - | 3Φ, 4, 380-415V, 50Hz | 3Φ, 4, 380-415V, 50Hz | 3Φ, 4, 380-415V, 50Hz | 3Φ, 4, 380-415V, 50Hz |
| Compressor Type | Outdoor Unit | Type | Twin BLDC Rotary | Twin BLDC Rotary | Twin BLDC Rotary | Twin BLDC Rotary | Twin BLDC Rotary | Twin BLDC Rotary |
| Power (Min/Nominal/Max) | Cooling | kW | 0.21/0.94/2.10 | 0.29/1.34/2.45 | 0.49/1.69/3.30 | 0.73/2.46/3.60 | 0.78/3.25/4.35 | 0.78/3.85/5.10 |
| | Heating | kW | 0.19/1.10/2.70 | 0.24/1.56/3.55 | 0.38/2.11/4.50 | 0.62/2.75/6.20 | 0.62/3.30/7.30 | 0.62/4.27/8.10 |
| Current Input | Cooling (Min/Std/Max) | A | 1.4/4.5/9.2 | 1.9/6.2/10.8 | 2.6/8.0/14.9 | 3.9/11.2/15.9 | - | - |
| | Heating (Min/Std/Max) | A | 1.3/5.1/11.9 | 1.6/7.1/15.6 | 2.7/9.8/19.8 | 3.2/12.4/27.2 | - | - |
| | Cooling - Tri-Phase (Min/Std/Max) | A | - | - | 1.1/3.0/5.5 | 1.5/3.8/5.5 | 1.6/5.1/6.7 | 1.6/6.0/7.8 |
| | Heating - Tri-Phase (Min/Std/Max) | A | - | - | 0.8/3.6/7.3 | 1.4/4.3/9.1 | 1.4/5.2/11.2 | 1.4/6.6/11.9 |
| Dimensions | | | | | | | | |
| Net Dimensions (W x H x D) | Indoor Unit | mm | 850 x 250 x 700 | 850 x 250 x 700 | 1,200 x 250 x 700 | 1,300 x 300 x 700 | 1,300 x 300 x 700 | 1,300 x 300 x 700 |
| | Outdoor Unit | mm | 880 x 638 x 310 | 880 x 798 x 310 | 940 x 998 x 330 | 940 x 1420 x 330 | 940 x 1420 x 330 | 940 x 1420 x 330 |
| Net Weight | Indoor Unit | kg | 26.5 | 26.5 | 34.5 | 38.5 | 38.5 | 38.5 |
| | Outdoor Unit | kg | 43 | 50 | 75 | 100 | 100 | 100 |



| Indoor Unit | | AC035BNMPKG/EU | AC052BNMPKG/EU | AC071BNMPKG/EU | AC100BNMPKG/EU | AC120BNMPKG/EU | AC140BNMPKG/EU |
|---------------------------|---|--|---------------------------|---------------------------|---------------------------|---------------------------|---------------------------|
| Outdoor Unit - Mono-Phase | | AC035BXAPKG/EU | AC052BXAPKG/EU | AC071BXAPKG/EU | AC100BXAPKG/EU | AC120BXAPKG/EU | AC140BXAPKG/EU |
| Outdoor Unit - Tri-Phase | | | - | AC071BXAPNG/EU | AC100BXAPNG/EU | AC120BXAPNG/EU | AC140BXAPNG/EU |
| Refrigerant | | | | | | | |
| Refrigerant | Type | R32 (contains fluorinated greenhouse gases. GWP = 675) | | | | | |
| | Factory Charging | kg | 1.2/20 m | 1.7/20 m | 2.7/30 m | 3.5/30 m | 3.5/30 m |
| | Charging Ton equivalent CO ₂ | tCO ₂ e | 0.81 | 1.15 | 1.82 | 2.36 | 2.36 |
| | Additional Refrigerant Charging | g/m | - | - | - | - | - |
| Piping Connections | Liquid Pipe | ø, inch | 1/4 | 1/4 | 3/8 | 3/8 | 3/8 |
| | Gas Pipe | ø, inch | 3/8 | 1/2 | 5/8 | 5/8 | 5/8 |
| Piping Length | Min/Max | m | 5/30 | 5 / 50 | 5 / 55 | 5/ 85 | 5/ 85 |
| Piping Height | Max | m | 20 | 30 | 30 | 30 | 30 |
| Piping Connections | Drain Pipe | ø, mm | VP 25 (OD32, ID25) | VP25 (OD 32, ID 25) | VP25 (OD 32, ID 25) | VP25 (OD 32, ID 25) | VP25 (OD 32, ID 25) |
| Others | | | | | | | |
| Panel | Model Code | | - | - | - | - | - |
| | Net Dimensions (W x H x D) | mm | - | - | - | - | - |
| | Net Weight | kg | - | - | - | - | - |
| Accessories | Drain Pump | | MDP-G075SP/ MDP-G075SQ | MDP-G075SP/ MDP-G075SQ | MDP-G075SP/ MDP-G075SQ | MDP-G075SP/ MDP-G075SQ | MDP-G075SP/ MDP-G075SQ |
| | Max. Lifting Height/ Displacement | mm / litres/h | 750/24 | 750/24 | 750/24 | 750/24 | 750/24 |

Accessories

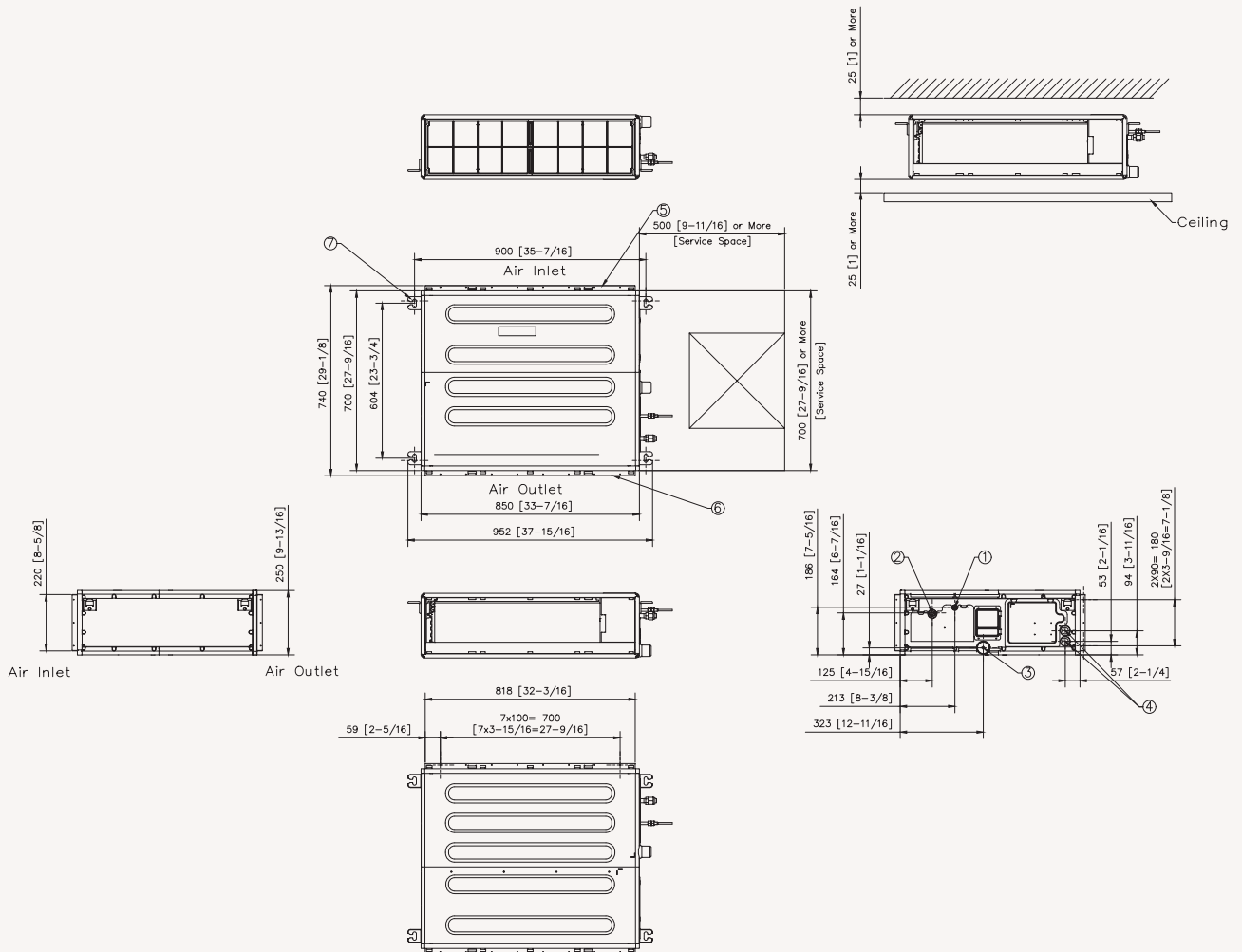
| | | | |
|------------------------------|-----------------------|---|---------------------|
| | | | |
| Drain Pump (optional) | Drain Pump (optional) | Wireless Remote Controller | Touch Controller |
| MDP-G075SP | MDP-G075SQ | AR-EH04E (to be matched with MRK-A10N) | MWR-SH11N |
| | | | |
| Advanced Wired Controller | Wi-Fi Kit | Wireless Receiver Kit | External Thermostat |
| MWR-WG00JN/ MWR-WG00KN | MIM-H04EN | MRK-A10N (to be matched with AR-EH04E) | MRW-TA |
| | | | |
| Touch Centralised Controller | DMS 2.5 | BACnet/Lonworks/PIM | ON/OFF Controller |
| MCM-A300N | MIM-D01AN | MIM-B17BN/B18BN/B16N | MCM-A202DN |

¹ Energy labels as shown are according to EU No 626/2011 (LOT10) label classification 2019, on a scale from D to A+++.

Dimensional drawings

MSP Duct HEE R32

AC035/052BNMPKG/EU



MSP Duct HEE R32

AC071BNMPKG/EU

